

TOWER CRANE

Topkit Tower Crane GHT6520-10

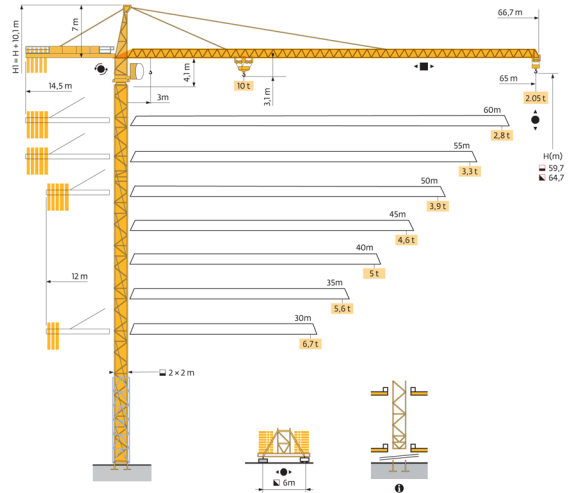
Mechanisms

400 V - 50 Hz		↑ ↓				↑ ↑ ↓ ↓				hp	kW	⚙️
55 RCS 25	n/min	0 → 44	0 → 88	0 → 22	0 → 44	55	40	500 m				
75 LVF 25 Optima	n/min	53 → 68 → 95 → 117	2,5	10	5	75	55	500m				
6 D3 V4	m/min	10 - 50 (10 t) - 100 (5 t)				6	4,4					
RCV185	rpm	0 → 0,8				2x9	2x6,6					
VB20A RT 544 A1 2V R ≈ 13 m	n/min	13,5 → 27				4x7	4x5,2					

CEI 38	IEC 38	kVA
400 V (+10% -10%) 50 Hz		55RCS: 75KVA 75LVF: 100KVA

TOWER CRANE

Topkit Tower Crane GHT6520-10

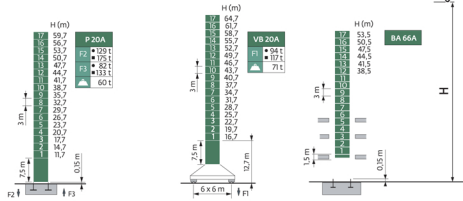


TOWER CRANE

Topkit Tower Crane GHT6520-10

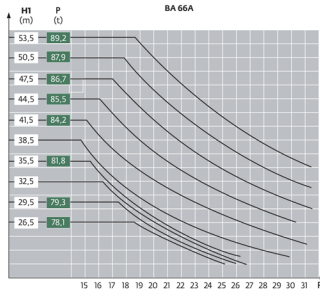
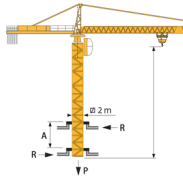
Reaction

2 m
30 m → 65 m



- In service
- Out of service
- ▲ Without load and ballast
- ▲ with longest jib and maximum height

Climbing Crane

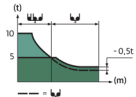
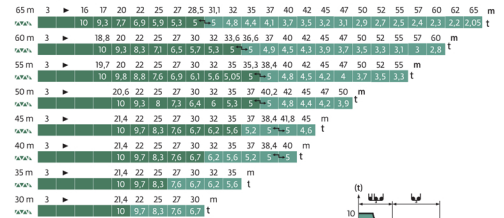


- A Distance between collars
- H1 Crane height
- P Crane weight (in service)
- R Horizontal reaction

TOWER CRANE

Topkit Tower Crane GHT6520-10

Load Diagrams



Anchorage

